

BRIGHTSIGN XT1143 PROMOTIONAL TOUCH PRESENTATION DEMO GUIDE

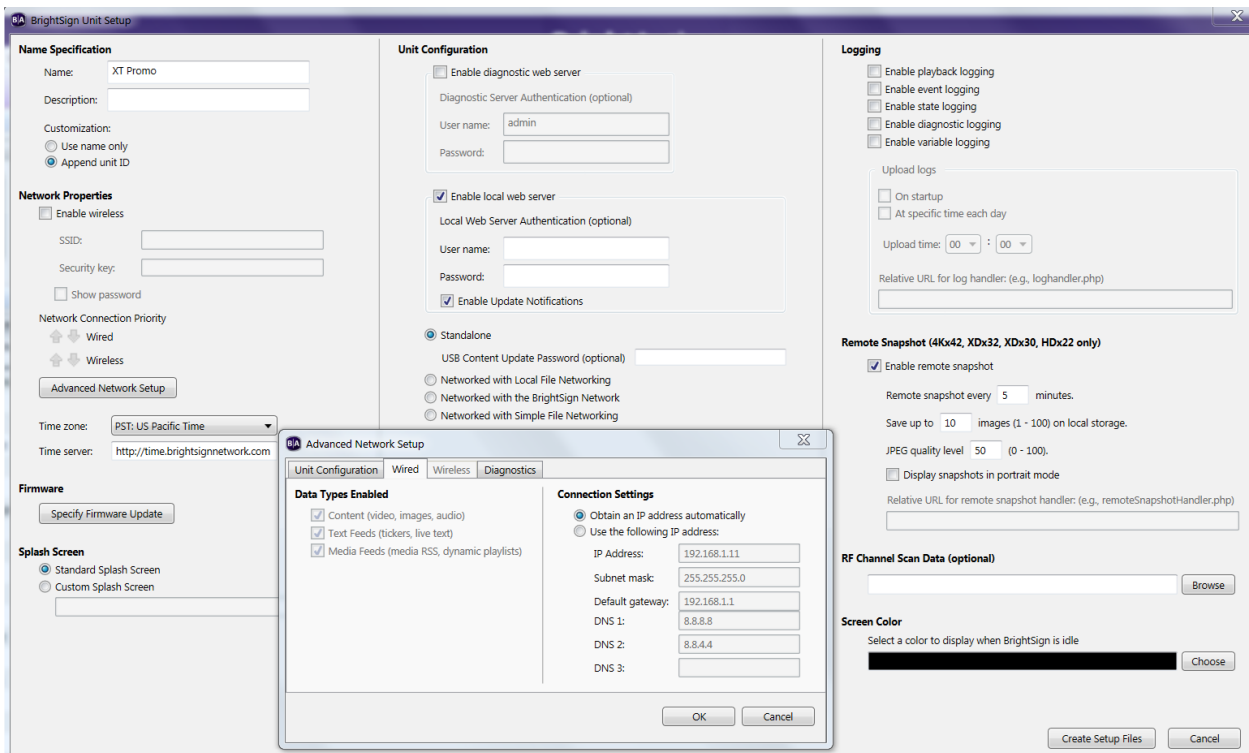
Setup and Use Instructions

This BrightSign XT1143 Promotional Touch Presentation is interactive via a touch screen or a USB mouse. It tells the whole BrightSign story including Corporate information, products, features, partners, showcase projects, and a set of example digital signage presentations that demonstrate various BrightSign features and capabilities.

Required Equipment

1. BrightSign XD1143

- Firmware v7.0.60 or higher: <https://www.brightsign.biz/downloads/xt3-series>
- Player setup: Standalone networking with local web server enabled for BrightSign App compatibility in some example presentations. Please note that Network Setup files can be downloaded from the demo website which will apply the following settings:



2. MicroSD Class 10 memory card containing the published XT Promo Demo

3. 1080p60 Touch screen or 1080p60fps screen with a USB mouse connected to the XT player

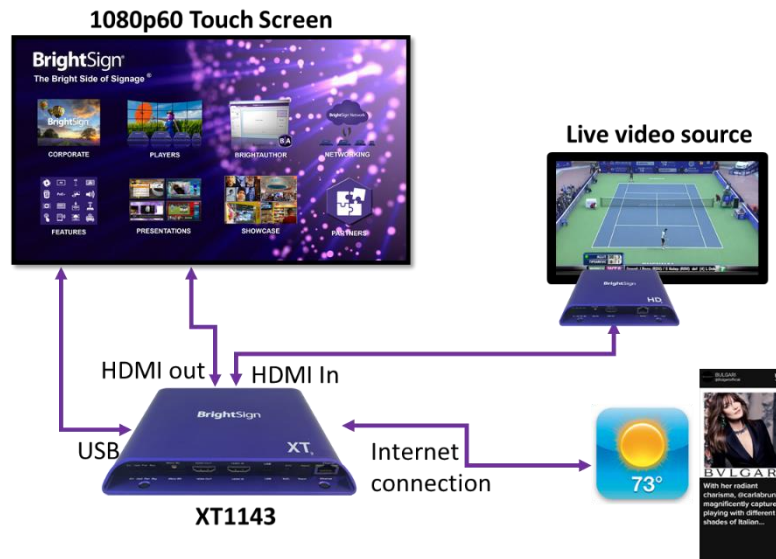
4. Two HDMI cables

5. Optional:

- A video source plugged into the XT1143's HDMI input for select example presentations. Note: you can use another BrightSign player playing a video connected to the HDMI input of the XT
- Internet connection (if no Internet connection is available, the weather widgets, social media and other live feeds will not populate in the example demos)
- iOS device running the BrightSign app (for select example presentations)

Setup Instructions

1. Download the published presentation from the [XT Demo Download webpage](#)
2. Unzip the published presentation file and copy the entire contents of the zip file onto an empty Class 10 MicroSD card.
3. Connect the BrightSign XT1143 player as shown in the diagram.
 - The unit connected to the HDMI input should be playing a looping video presentation.
2. Insert the MicroSD card containing the published presentation into the XT1143 and apply power to run the presentation.



Operating the BrightSign XT Promotional Presentation

This presentation is interactive using a 1080p60 touch screen or USB mouse. There are 8 sections to select and demonstrate as indicated on the Main Presentation Screen below.

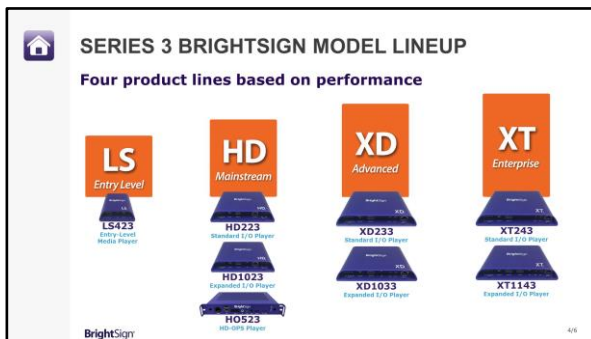


XT Promotional Main Presentation Screen

1. Operation of Corporate, Players, BrightAuthor, Networking Sections:

These sections walk through a set of images that describe each topic in detail. The number of slides for each topic is indicated in the lower right corner of each image.

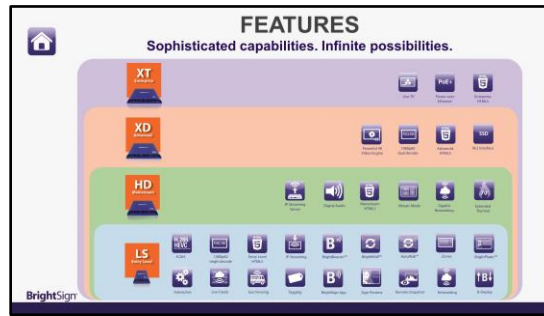
- Swipe starting near the middle of the screen to advance to the next image. You may move backwards or forwards through the set of images.
- In the **Players** section on image #4, you may tap any of the player photos to learn more about that model.
 - Spin/pinch/zoom the player image to view all angles and ports.
 - Swipe the lower section of the screen to learn about the features and applications of that model



- Tap the **Home** icon to return to the Main Presentation Screen.

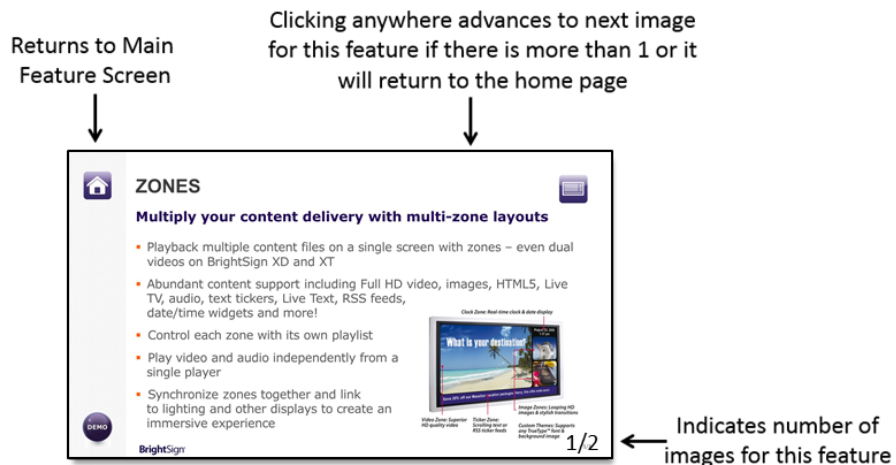
2. Features Section:

- From the Main Feature Screen, tap a **feature icon** to learn more about it. Tap the **home icon** in the upper left corner to return to the Main Presentation Screen.



Main Feature Screen

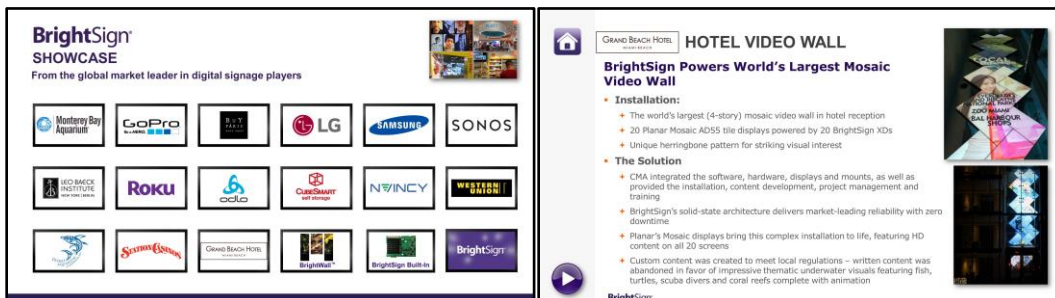
- Once you tap on a **Feature** icon, you have the following options:
 - Tap anywhere on the screen to advance to the next slide in the feature series if there is one.
 - Tap the **Home** icon to return to the Main Feature Screen.



3. Showcase Section:

View an image and/or a short video of some successful and unique BrightSign customer installations.

- Tap a logo** to view an image and/or video of the customer installation.
 - Some showcase images have a **Play icon** if a video is also available to view
- During video playback, tap the screen at any time during the video playback to return to the Main Showcase Screen. Once playback is complete the video will automatically return to the Main Showcase Screen.
- To return to the Main Presentation Screen, select the **BrightSign** logo in the upper-left corner of the screen.



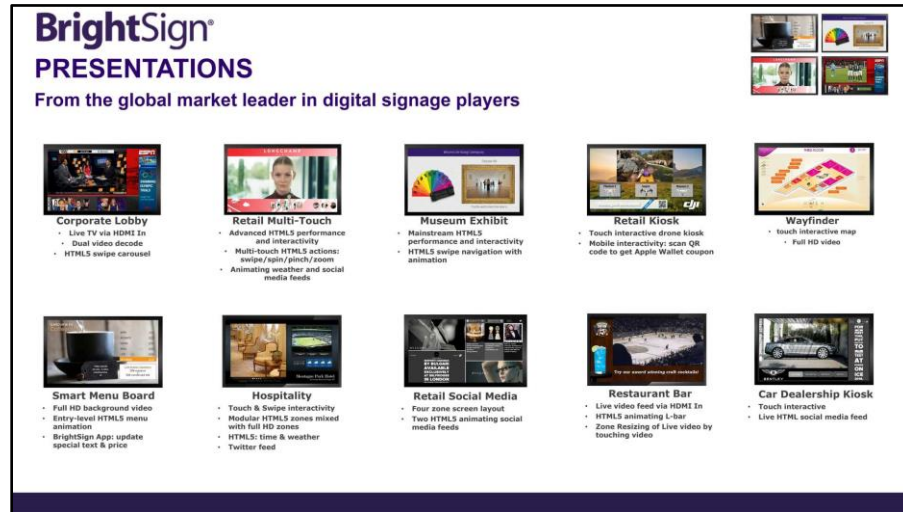
Main Showcase Screen

Showcase image with Play icon

4. Presentations Section:

This section allows you to select from various example presentations that highlights various features and capabilities that BrightSign offers.

- **Tap the image** of an example presentation to view it. The text below each presentation image describes the features it demonstrates. **Tap the top of the screen** to return to the Main Promo Demo screen
 - Please note that all the presentations utilize the *Switching Presentations* BrightAuthor feature which means you will experience a short delay as the example presentation loads as well as when you return to the Main Presentation Screen.



Main Presentations Screen

- When viewing an example presentation, tap the **home icon** to return to the Main Presentation Screen.
- For the **Retail Social Media Demo**, use the LIVE and LOCAL buttons in the lower right to view the social media posts live from your Internet connection or local from images saved on the SD card.

