

BrightAuthor connected

CLLOUD-CONNECTED APPLICATION TO CREATE, PUBLISH & MANAGE CONTENT

BrightAuthor:connected is BrightSign's authoring software application that allows you to easily create, publish and manage digital signage presentations that run flawlessly on BrightSign players. It offers an enhanced and a unified BrightSign experience with a common user interface, workflow and feature set available for PC, Mac and a Chrome web browser. BrightAuthor:connected offers an intuitive environment to create impactful presentations while adding the ability to securely connect to BSN.cloud enabled players to take advantage of new real time player controls as well as robust network and content management tools. Experience BrightAuthor:connected for free to produce, deliver and update your digital signage with ease.

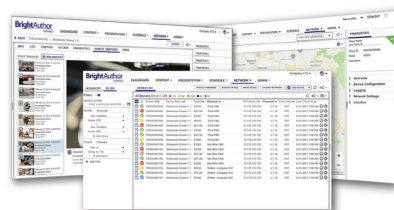
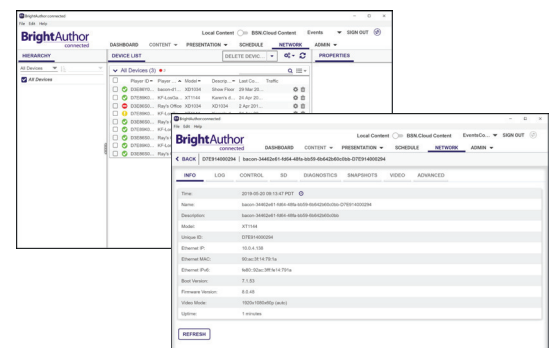
Features

1. Author. Easily create presentation layouts & playlists for simple to sophisticated digital signs using content in your media library hosted on BSN.cloud with a Content Cloud subscription or stored locally with a free Control Cloud subscription. BrightAuthor:connected supports a prolific array of content types and formats with a unified experience, feature set and workflow for PC, Mac and a Chrome browser interface so you can work wherever and whenever with ease.



2. Play. Take the guess work out of playing your presentations on BrightSign. BrightAuthor:connected provides an intuitive calendar-view to easily schedule and day-part your presentation playback. Publishing your content is an automated process that packages up your content, playlist and controls to deliver flawless playback. Publishing options include local storage for non-networked players, free local area and simple file networking with Control Cloud, or cloud-based publishing with a Content Cloud subscription.

3. Real Time Control. Use BrightAuthor:connected to securely access, control and communicate in real time with cloud-based players from any remote location with the Control Cloud subscription included with every player. Get real time player health and access to the diagnostic web server to control players by performing remote reboots & deploying BrightSign OS updates. You can even initiate remote snapshots on demand to see what's playing on-screen.



4. Manage. Network managers with Content Cloud subscriptions can remotely view compiled performance data over time including event logs and proof of play via reports, filters and queries. Access to a set of robust network management and administration tools are also available such as mapping player locations, network grouping, and email notifications to bring attention to specific network activities and subscription status.