

BrightSign® HS5

BrightSign's System-on-a-Chip solution.

BrightSign HS5 revolutionizes System on a Chip (SoC) solutions with built-In technology that seamlessly integrates into commercial displays to deliver superior, secure, and reliable all-in-one digital signage.

Small Showcases

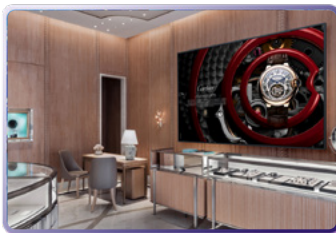
Big experiences in a wide array of spaces.



- Flawless video playback
- Essential animations
- Flexible interactive options

Large Impressions

Bring extensive experiences to life.



- Full HD or 4K model options
- Streaming video
- Streamlined deployment

Versatile Designs

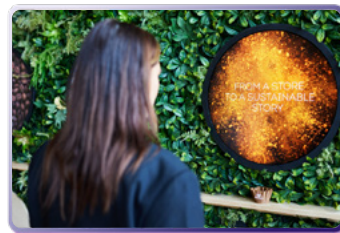
Easily integrated into any existing set up.



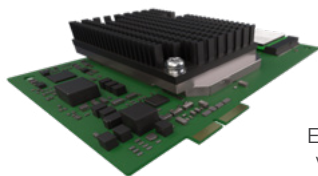
- Choice of interactive ports
- POS integrations
- Vast integrated CMS options

Unique Shapes and Sizes

Deliver experiences in uncommon spaces or aspect ratios.



- Efficient all-in-one solution
- Versatile network possibilities
- Remote player management



HS125 HD Package

Embeds commercial displays with superior Full HD video, essential graphics power and flexible connectivity options.

HS145 4K Package

Elevates video capabilities to stellar 4K resolution.



The BrightSign HS5 Advantage

- Enables qualified screen manufacturers to offer trusted BrightSign-based SoC displays
- Streamline installations with an all-in-one solution that minimizes cabling and setup time
- Seamlessly embed into small and large format displays with Full HD or 4K options
- Expand opportunities to deliver superior signage features and run essential motion graphics
- Compatible with all BrightSign software, services, and integrated CMS solutions
- Operate with unparalleled reliability, security, and sustainability on BrightSignOS™
- Reduce total cost of ownership with complimentary remote player management and controls
- Obtain CMS choice flexibility with a trusted global network of leading integrated partner solutions

BrightSignOS™

The power of purple.

Harness the power of BrightSignOS, designed specifically for sustainable digital signage, it powers every BrightSign player with legendary reliability, security, and performance.



SECURE

Unrivaled security that reduces risk to near zero with purpose-built file system designed to remove vulnerabilities and only runs signage.

- Exceptionally protected operating system with a secure digital signature
- Runs a singular signage application to protect against viruses
- Configurable to any type of security profile
- Security extends to integrated CMS solutions



RELIABLE

Legendary reliability with unmatched uptimes and a lower total cost of ownership.

- Persistent self-healing protocols resulting in unmatched uptimes
- Secure built-in remote player management and monitoring
- Remote diagnostics and controls to reduce costly on-site visits
- Removable storage that avoids rip/replace situations



SUPERIOR

Superior signage performance for simple to sophisticated experiences.

- Optimized to run cutting-edge video and motion graphics
- Abundant signage features available with free authoring software
- Integrated with hundreds of global CMS solutions
- Highly extensible to securely run specialized signage technologies



SUSTAINABLE

Unmatched sustainability through updates that stay ahead of market demands.

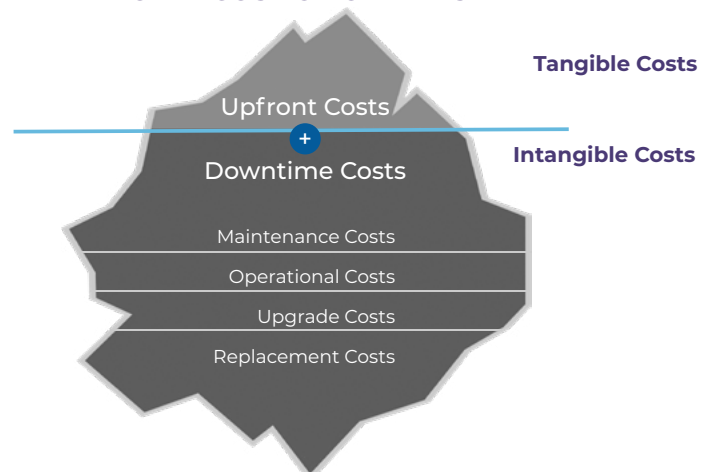
- Low power requirements with high performance
- Guaranteed long life cycle support for unprecedented longevity
- Free updates applied on-demand and consistent across hardware generations
- Remote re-provisioning at any time to ensure flexibility

Invest in BrightSignOS to achieve long-term success

Designed to reduce risk and save on signage.

Downtime is the most expensive investment in signage that often gets overlooked. Failure doesn't happen at implementation, it happens after. BrightSignOS™ is designed to solve and mitigate ongoing risks to avoid rip and replace situations resulting in huge savings throughout the long life of your player.

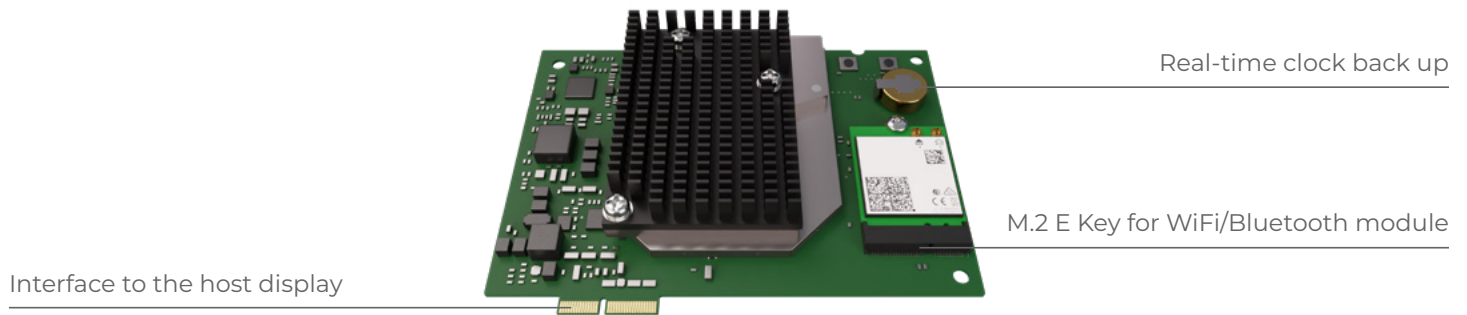
TOTAL COST OF OWNERSHIP



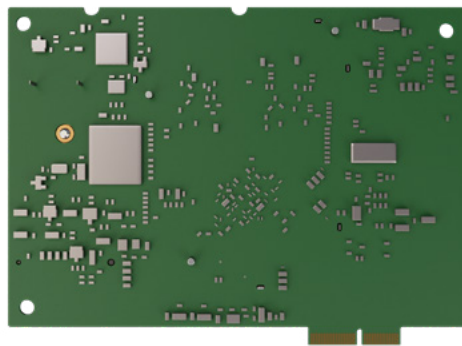
Hardware Specifications

Customizable I/O

Front View



Rear View



Software & Services

A scalable cloud infrastructure that securely connects BrightSign players to a suite of integrated services for remote device, content, and network management.

bsn.Control

Free remote player monitoring and control service with a choice of CMS.

bsn.Content

Paid CMS service for cloud-based content, network and user management.

Partner CMS Solutions

Flexible choices with seamless player integrations.

brightAuthor connected

Free software to provision players, access BSN.Cloud services, and connect to a variety of partner CMS solutions.



BSN.Cloud Solution

Technical Specifications

	HS125	HS145
I/O Package	Expanded I/O	4K Expanded I/O
AI ENABLEMENT		
Neural Processing Unit (NPU)	X	X
VIDEO & HTML5 ENGINES		
4K video decoding		X 8-bit at 60p 10-bit at 30p
Full HD at 60p video decoding	X	X
HTML support: HTML5, CSS, JavaScript, SVG, WebGL, and Chromium compatible	X	X
Supports 4K IP streaming	X	X
MEDIA FORMATS		
4K Video codecs: H.265, H.264	X	X
4K Video Containers: .ts, .mov, .mp4, .mkv	X	X
Full HD Video Codecs: H.265, H.264 (MPEG-4, Part 10), MPEG-2	X	X
Full HD Video Containers: .ts, .mpg, .vob, .mov, .mp4, .m2ts	X	X
Images: BMP, JPEG, PNG	X	X
Audio: MP2, MP3, AAC and WAV (AC3 is passed through)	X	X
DISPLAY RESOLUTIONS		
Supports all common screen resolutions	X (up to Full HD)	X (up to 4k)
Supports additional & customizable display resolutions with unique aspect ratios	X	X
ACCESSORIES		
BP200 & BP900 USB Button Pads		X
MicroSD Class 10 Cards (various capacities)	X	X
BrightSign Mobile USB Modem & Service	X	X
MISCELLANEOUS		
Dimensions (W x D x H)	100 x 70 x 14.25 mm	100 x 70 x 14.25 mm
Multi-Country Power & Regulatory Approvals	X	X
Power Supply	12V / 1.5A	12V / 1.5A
Built-in Wall Mounting	X	X
Included 5-Year Warranty, parts and labor*	X	X

*Warranty program applies to Series 5 players purchased from BrightSign after January 1, 2025. Warranty program does not apply to accessories. Learn more at <https://www.brightsign.biz/brightsign-players/warranty/>.