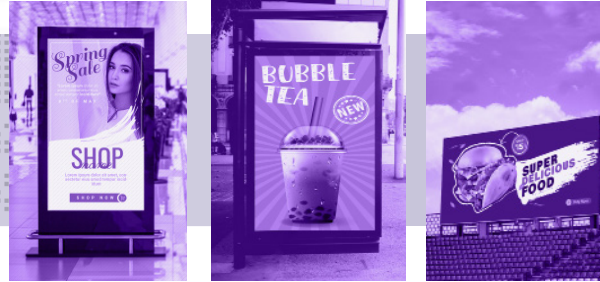


BrightSign® Mobile

Universal connectivity with low-cost plans
built for signage



BrightSign Mobile offers an all-in-one solution for reliable player connectivity where Internet access is a challenge. It includes a low-profile USB regional modem with an installed SIM card and your choice of data plans that are custom-designed for signage and exclusive to BrightSign. Our affordable & flexible data plans can easily connect your player to the cloud with confidence.



Features and Benefits

Universal Connectivity

- Delivers reliable player connectivity where access is a challenge

Stellar Coverage

- Supplies 4G performance with two Tier 1 carriers across the USA, Canada & Europe

All-in-One Solution

- Includes a low-profile USB regional modem paired with a mobile data service supported by BrightSign

Affordable Plans

- Offers three low-cost, 6-month data plans with low minimum data requirements designed for signage

Flexible Data Options

- Supports month-to-month services and fixed data prices for both overages & scheduled content updates

Fully BrightSign-Integrated

- Provides plug & play modem setup with full support on BSN.cloud, BrightAuthor:connected & integrated partner CMS solutions



\$120 MSRP

BrightSign Regional USB Modem

Low-profile USB-A connected regional modem with an installed SIM card for the following regions:

- North America:
SKU: MDM-USB Connect 4G v2 NA
- Europe:
SKU: MDM-USB Connect 4G v2 EU

Compatible on all BrightSign Series 3 & 4 players with a USB port & BrightSign AU335

Notes:

- BrightSign Mobile service will only function on a BrightSign purchased regional USB model
- When using a BrightSign LS424 player, we recommend connecting the BrightSign USB modem to a powered USB hub for uninterrupted operation.

Data Plans

| | USA | EUROPE | CANADA |
|----------------------------------|----------------|----------------|----------------|
| 500 MB/MONTH PLAN | \$13/GB | \$13/GB | \$26/GB |
| Initial 6-month contract | \$39 | \$39 | \$78 |
| Monthly pricing thereafter | \$6.50 | \$6.50 | \$13 |
| Hard Cap: Additional 500 MB data | \$6.50 | \$6.50 | \$13 |
| Soft Cap: Overage costs | \$0.013/MB | \$0.013/MB | \$0.026/MB |
| 1 GB/MONTH PLAN | \$11/GB | \$11/GB | \$25/GB |
| Initial 6-month contract | \$66 | \$66 | \$150 |
| Monthly pricing thereafter | \$11 | \$11 | \$25 |
| Hard Cap: Additional 500 MB data | \$5.50 | \$5.50 | \$12.50 |
| Soft Cap: Overage costs | \$0.011/MB | \$0.011/MB | \$0.025/MB |
| 2 GB/MONTH PLAN | \$10/GB | \$10/GB | \$24/GB |
| Initial 6-month contract | \$120 | \$120 | \$288 |
| Monthly pricing thereafter | \$20 | \$20 | \$48 |
| Hard Cap: Additional 500 MB data | \$5 | \$5 | \$23 |
| Soft Cap: Overage costs | \$0.010/MB | \$0.010/MB | \$0.024/MB |

NOTES:

- BrightSign Mobile data plans will only function on a BrightSign regional USB modem
- Pricing does not include taxes or VAT
- After the first 6-months of the initial contract, plans automatically change to month-to-month charges
- When data limits are reached, service continues & overage pricing automatically is charged to your account
- Hard cap plans available for those that cannot tolerate overages

Getting Started



BrightSign Mobile Country Support

COUNTRIES

- Austria
- Belgium
- Bulgaria
- Canada
- Croatia
- Cyprus
- Czech Republic
- Denmark
- Estonia
- Finland
- France
- Germany
- Greece
- Hungary
- Ireland
- Italy
- Latvia
- Lithuania
- Luxembourg
- Malta
- Netherlands
- Norway
- Poland
- Portugal
- Romania
- Slovakia
- Slovenia
- Spain
- Sweden
- Switzerland
- United Kingdom
- United States of America

Note

- Plans can be purchased from any supported country and then used in another supported country
- The correct regional USB modem must match the region in which it will be operating.