

BrightSign® XS6

BrightSign's highest-performing System-on-a-Chip.



BrightSign XS6 delivers a high-performance System on a Chip (SoC) solution with built-in technology that seamlessly integrates into commercial displays to deliver stunning, secure, and reliable all-in-one digital signage with stunning 40k 60Hz visuals.

Small Showcases

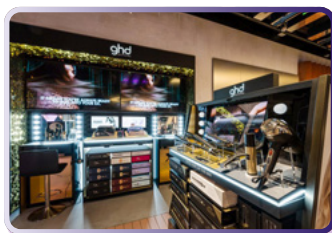
Big experiences in a wide array of spaces.



- Flawless video playback
- Essential animations
- Flexible interactive options

Large Impressions

Bring extensive experiences to life.



- Full HD or 4K model options
- Streaming video
- Streamlined deployment

Versatile Designs

Easily integrated into any existing set up.



- Choice of interactive ports
- POS integrations
- Vast integrated CMS options

Unique Shapes and Sizes

Deliver experiences in uncommon spaces or aspect ratios.



- Efficient all-in-one solution
- Versatile network possibilities
- Remote player management



XS156

4K Package

Embeds commercial displays with stunning 4K 60Hz video, 4K graphics and flexible connectivity options.

The BrightSign XS6 Advantage

- Enables qualified screen manufacturers to offer trusted BrightSign-based SoC displays
- Streamline installations with an all-in-one solution that minimizes cabling and setup time
- Seamlessly embed into small and large format displays with Full HD or 4K 60Hz options
- Expand opportunities to deliver compelling signage features and run higher-quality, impactful 4K graphics
- Compatible with all BrightSign software, services, and integrated CMS solutions
- Operate with unparalleled reliability, security, and sustainability on BrightSignOS™
- Reduce total cost of ownership with complimentary remote player management and controls
- Obtain CMS choice flexibility with a trusted global network of leading integrated partner solutions
- Leverage an integrated Neural Processing Unit (NPU) which enables BrightSign players to run powerful AI applications without compromising on video or graphics performance

BrightSignOS™

The power of purple.

Harness the power of BrightSignOS, designed specifically for sustainable digital signage, it powers every BrightSign player with legendary reliability, security, and performance.



SECURE

Unrivaled security that reduces risk to near zero with purpose-built file system designed to remove vulnerabilities and only runs signage.

- Exceptionally protected operating system with a secure digital signature
- Runs a singular signage application to protect against viruses
- Configurable to any type of security profile
- Security extends to integrated CMS solutions



RELIABLE

Legendary reliability with unmatched uptimes and a lower total cost of ownership.

- Persistent self-healing protocols resulting in unmatched uptimes
- Secure built-in remote player management and monitoring
- Remote diagnostics and controls to reduce costly on-site visits
- Removable storage that avoids rip/replace situations



SUPERIOR

Superior signage performance for simple to sophisticated experiences.

- Optimized to run cutting-edge video and motion graphics
- Abundant signage features available with free authoring software
- Integrated with hundreds of global CMS solutions
- Highly extensible to securely run specialized signage technologies



SUSTAINABLE

Unmatched sustainability through updates that stay ahead of market demands.

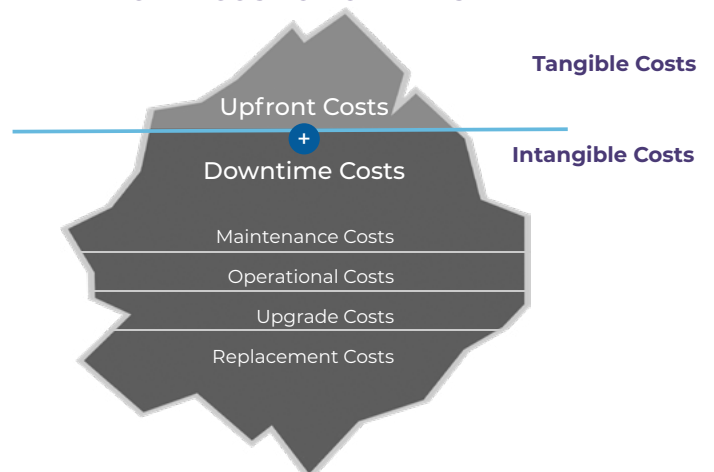
- Low power requirements with high performance
- Guaranteed long life cycle support for unprecedented longevity
- Free updates applied on-demand and consistent across hardware generations
- Remote re-provisioning at any time to ensure flexibility

Invest in BrightSignOS to achieve long-term success

Designed to reduce risk and save on signage.

Downtime is the most expensive investment in signage that often gets overlooked. Failure doesn't happen at implementation, it happens after. BrightSignOS™ is designed to solve and mitigate ongoing risks to avoid rip and replace situations resulting in huge savings throughout the long life of your player.

TOTAL COST OF OWNERSHIP

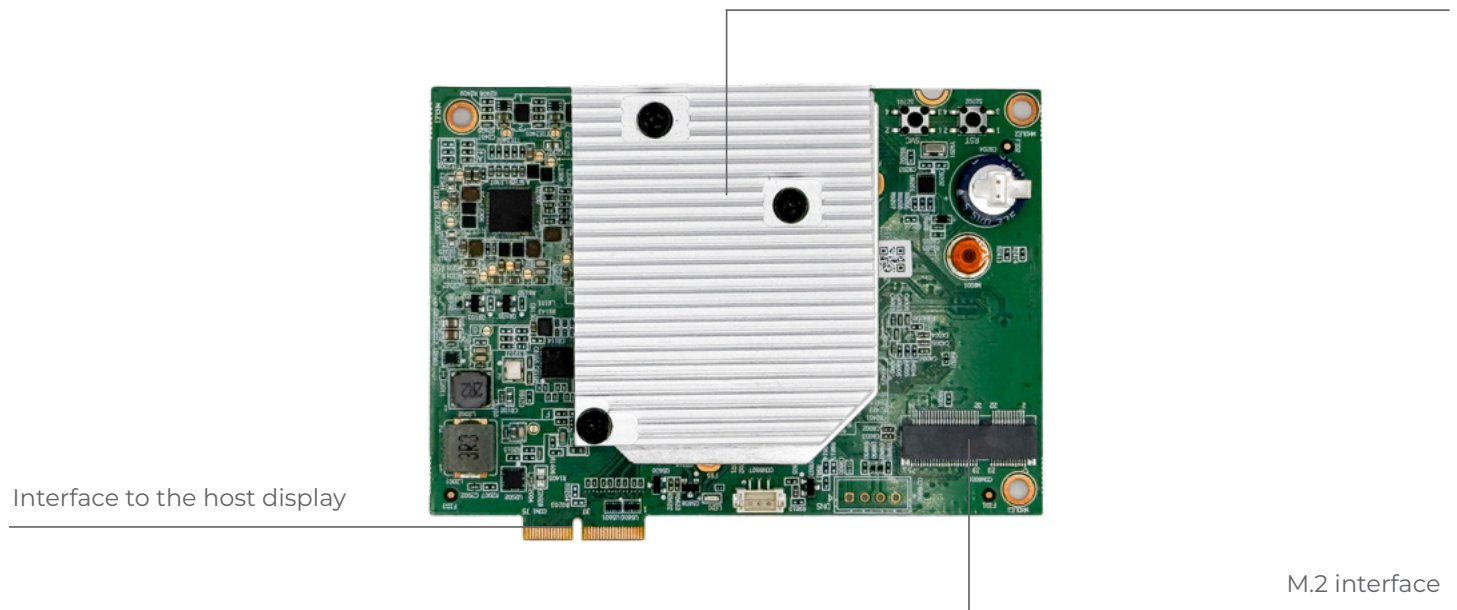


Hardware Specifications

Customizable I/O

Front View

Optional BrightSign heat sink



Software & Services

A scalable cloud infrastructure that securely connects BrightSign players to a suite of integrated services for remote device, content, and network management.

bsn.Control

Free remote player monitoring and control service with a choice of CMS.

bsn.Content

Paid CMS service for cloud-based content, network and user management.

Partner CMS Solutions

Flexible choices with seamless player integrations.

brightAuthor connected

Free software to provision players, access BSN.Cloud services, and connect to a variety of partner CMS solutions.



BSN.Cloud Solution

Technical Specifications

	XS156
I/O Package	4K Expanded I/O
AI ENABLEMENT	
Neural Processing Unit (NPU)	X
VIDEO & HTML5 ENGINES	
4K video decoding	Dual 10-bit at 60p
Full HD at 60p video decoding	X (dual)
HD images & graphics	X
HTML5 Performance	Responsive multi-touch 2D WebGL
HTML support: HTML5, CSS, JavaScript, SVG, WebGL, and Chromium compatible	X
Supports 4K IP streaming	X
HTML resolution	4K
10-bit HDR support	X
MEDIA FORMATS	
4K Video codecs: H.265/HEVC, H.264/AVC, VP9	X
4K Video Containers: MP4, .MOV, .MKV, .WEBM, .TS, .MPG, .MPEG, .PS, .M2P, .MPV, .AVI, .HEVC, .H264, .AVI, .VP9, and .MJPG	X
Full HD Video Codecs: H.265/HEVC, H.264/AVC, VP9, MPEG 4 part 2, MPEG1 video, MPEG2 video	X
Full HD Video Containers: MP4, .MOV, .MKV, .WEBM, .TS, .MPG, .MPEG, .PS, .M2P, .MPV, .AVI, .HEVC, .H264, .AVI, .VP9, and .MJPG	X
Images: BMP, JPEG, PNG	X
Audio: MP2, MP3, AAC and WAV (eAC3 is passed through)	X
DISPLAY RESOLUTIONS	
Supports all common screen resolutions	X (up to 4K 60Hz)
Supports additional & customizable display resolutions with unique aspect ratios	X
BRIGHTSIGN ACCESSORIES	
BP200 & BP900 USB Button Pads	X
MicroSD Class 10 Cards (various capacities)	X
BrightSign Mobile USB Modem & Service	X
MISCELLANEOUS	
Dimensions (W x D x H)	100 x 70 x 14.25 mm
Multi-Country Power & Regulatory Approvals	X
Power Supply	12V / 1.5A
Built-in Wall Mounting	X
Included 5-Year Warranty, parts and labor*	X

*Warranty program applies to Series 5 players purchased from BrightSign after January 1, 2025. Warranty program does not apply to accessories. Learn more at <https://www.brightsign.biz/brightsign-players/warranty/>.